



## Features

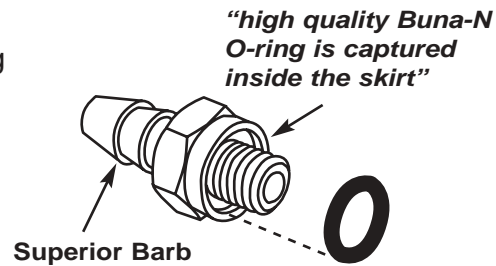
- Reliability of a metal-to-metal mechanical fit
- Captured O-Ring for superior seal
- Precision machined barb design
- Electroless Nickel Plated

## O-ring Fitting

The O-ring fitting design was perfected by Pneumadyne engineers in the early 1980's. This unique fitting created a standard for industry and today numerous competitors have attempted to replicate our design. The Pneumadyne O-ring fitting was designed with the superior static sealing qualities of an O-ring plus the reliability of a metal-to-metal mechanical fit.

When properly installed the skirt around the O-ring allows the fitting to mechanically seat on the rim of the female thread and hold the fitting tight. The high quality Buna-N O-ring is captured inside the skirt of the fitting, concealing it from view and providing a clean looking power-the Buna-N O-ring is not pinched but rather compressed within the fitting skirt which ensures a leakproof fit even when mated with a less than perfect sealing surface. When torqued down the mechanical fit keeps the fittings tight and retains its position even under constant vibration.

Our captured O-ring design also eases installation, there is no need to replace or reposition the seal - we have eliminated the need for replacement gaskets or washers.

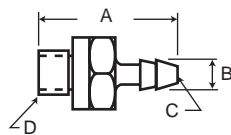


**Custom designs are welcome**

## Materials

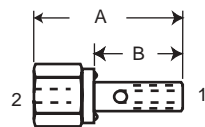
Brass, Electroless Nickel, Stainless Steel 303, Buna-N O-Rings (standard) optional seals available -contact factory

## Straight Connector



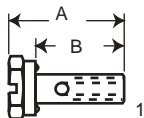
| Product Number      | A    | B<br>Barb | C<br>Orifice<br>OD | D         | Hex  | Brass<br>ENI | SS<br>303 | Installed<br>Height |
|---------------------|------|-----------|--------------------|-----------|------|--------------|-----------|---------------------|
| <b>SBF-062</b>      | .594 | .100      | .046               | 10-32 (M) | 5/16 | ●            |           | .438                |
| <b>SBF-062-LP</b>   | .485 | .100      | .046               | 10-32 (M) | 5/16 | ●            |           | .33                 |
| ⌘ <b>SBF-062-SS</b> | .594 | .100      | .046               | 10-32 (M) | 5/16 |              | ●         | .438                |
| <b>SBF-062-1/4</b>  | .594 | .100      | .046               | 10-32 (M) | 1/4  | ●            |           | .438                |
| <b>SBF-110</b>      | .578 | .141      | .078               | 10-32 (M) | 5/16 | ●            |           | .422                |
| ⌘ <b>SBF-110-SS</b> | .578 | .141      | .078               | 10-32 (M) | 5/16 |              | ●         | .422                |
| <b>SBF-110-1/4</b>  | .578 | .141      | .078               | 10-32 (M) | 1/4  | ●            |           | .422                |
| <b>SBF-140</b>      | .656 | .172      | .078               | 10-32 (M) | 5/16 | ●            |           | .50                 |
| ⌘ <b>SBF-140-SS</b> | .656 | .172      | .078               | 10-32 (M) | 5/16 |              | ●         | .50                 |
| <b>SBF-170</b>      | .719 | .200      | .093               | 10-32 (M) | 5/16 | ●            |           | .563                |
| ⌘ <b>SBF-170-SS</b> | .719 | .200      | .093               | 10-32 (M) | 5/16 |              | ●         | .563                |
| <b>SBF-170-1/4</b>  | .719 | .200      | .093               | 10-32 (M) | 1/4  | ●            |           | .563                |

## Stud: Manifold



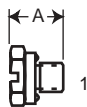
| Product Number | A    | B    | 1<br>tap  | 2         | Hex  | Brass<br>ENI | SS<br>303 | Installed<br>Height |
|----------------|------|------|-----------|-----------|------|--------------|-----------|---------------------|
| <b>SFD-10</b>  | .858 | .508 | 10-32 (F) | 10-32 (M) | 5/16 | ●            |           | .588                |

## Stud: Slotted



| Product Number     | A   | B    | 1         | Hex  | Brass<br>ENI | SS<br>303 | Installed<br>Height |
|--------------------|-----|------|-----------|------|--------------|-----------|---------------------|
| <b>STD-10</b>      | .67 | .508 | 10-32 (M) | 5/16 | ●            |           | .40                 |
| ⌘ <b>STD-10-SS</b> | .67 | .508 | 10-32 (M) | 5/16 |              | ●         | .40                 |

## Plug: Slotted



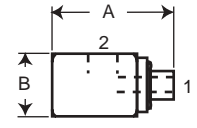
| Product Number    | A   | 1         | Hex  | Brass<br>ENI | SS<br>303 | Installed<br>Height |
|-------------------|-----|-----------|------|--------------|-----------|---------------------|
| <b>SPG-10</b>     | .30 | 10-32 (M) | 5/16 | ●            |           | .144                |
| <b>SPG-10-1/4</b> | .30 | 10-32 (M) | 1/4  | ●            |           | .144                |

● Please refer to page 118 for **Ordering Information**.



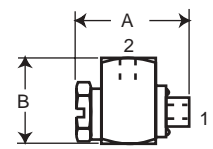
| Product Number  | A    | B      | 1         | 2         | Brass ENI | Installed Height |
|-----------------|------|--------|-----------|-----------|-----------|------------------|
| <b>SBF-32-1</b> | .725 | 3/8 sq | 10-32 (M) | 10-32 (F) | ●         | .569             |

**Elbow: Fixed**



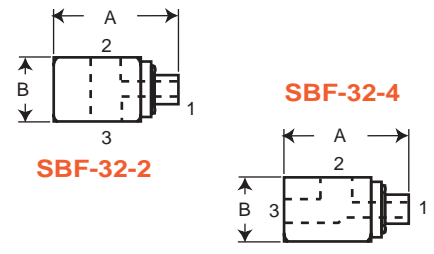
| Product Number   | A   | B   | 1         | 2         | Hex  | Brass ENI | SS 303 | Installed Height |
|------------------|-----|-----|-----------|-----------|------|-----------|--------|------------------|
| <b>STL-10</b>    | .65 | .50 | 10-32 (M) | 10-32 (F) | 5/16 | ●         |        | .52              |
| <b>STL-10-SS</b> | .65 | .50 | 10-32 (M) | 10-32 (F) | 5/16 |           | ●      | .52              |

**Elbow: Swivel**



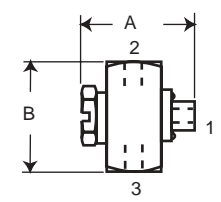
| Product Number  | A    | B      | 1         | 2         | 3         | Brass ENI | Installed Height |
|-----------------|------|--------|-----------|-----------|-----------|-----------|------------------|
| <b>SBF-32-2</b> | .725 | 3/8 sq | 10-32 (M) | 10-32 (F) | 10-32 (F) | ●         | .569             |
| <b>SBF-32-4</b> | .725 | 3/8 sq | 10-32 (M) | 10-32 (F) | 10-32 (F) | ●         | .569             |

**Tee: Fixed**



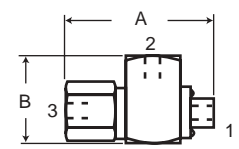
| Product Number   | A   | B   | 1         | 2, 3      | Hex  | Brass ENI | SS 303 | Installed Height |
|------------------|-----|-----|-----------|-----------|------|-----------|--------|------------------|
| <b>STT-10</b>    | .65 | .63 | 10-32 (M) | 10-32 (F) | 5/16 | ●         |        | .52              |
| <b>STT-10-SS</b> | .65 | .63 | 10-32 (M) | 10-32 (F) | 5/16 |           | ●      | .52              |

**Tee: Swivel**



| Product Number | A   | B   | 1         | 2, 3      | Hex  | Brass ENI | SS 303 | Installed Height |
|----------------|-----|-----|-----------|-----------|------|-----------|--------|------------------|
| <b>SFL-10</b>  | .85 | .50 | 10-32 (M) | 10-32 (F) | 5/16 | ●         |        | .72              |

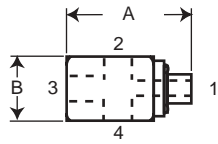
**Run Tee: Swivel**



Fittings  
O-Ring

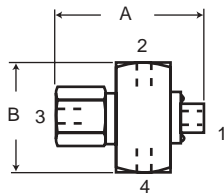


## Cross: Fixed



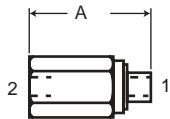
| Product Number  | A    | B      | 1         | 2,3,4     | Brass ENI | SS 303 | Installed Height |
|-----------------|------|--------|-----------|-----------|-----------|--------|------------------|
| <b>SBF-32-3</b> | .725 | 3/8 sq | 10-32 (M) | 10-32 (F) | ●         |        | .569             |

## Cross: Swivel



| Product Number | A   | B   | 1         | 2, 3,4    | Hex  | Brass ENI | SS 303 | Installed Height |
|----------------|-----|-----|-----------|-----------|------|-----------|--------|------------------|
| <b>SFT-10</b>  | .85 | .63 | 10-32 (M) | 10-32 (F) | 5/16 | ●         |        | .72              |

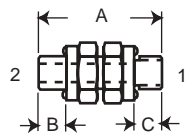
## Adapter



| Product Number | A   | Hex  | 1         | 2         | Brass ENI | SS 303 | Installed Height |
|----------------|-----|------|-----------|-----------|-----------|--------|------------------|
| <b>SSP-10</b>  | .70 | 5/16 | 10-32 (M) | 10-32 (F) | ●         |        | .544             |

## Nipple:

### Universal Adjustable



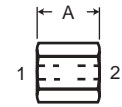
| Product Number   | A   | B adjst | C fixed | Hex  | 1, 2      | Brass ENI | SS 303 | Installed Height |
|------------------|-----|---------|---------|------|-----------|-----------|--------|------------------|
| <b>SFU-22</b>    | .72 | .185    | .15     | 5/16 | 10-32 (M) | ●         |        | .385             |
| <b>SFU-22-SS</b> | .72 | .185    | .15     | 5/16 | 10-32 (M) |           | ●      | .385             |

B = adjustable nut tightened to fixed nut

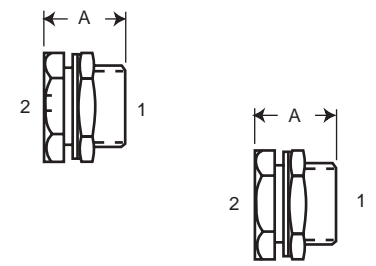
All dimensions and specifications are subject to change without notice



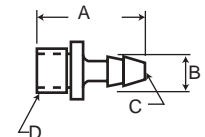
| Product Number | A   | Hex  | 1 thru    | Brass | Brass ENI | Coupling |
|----------------|-----|------|-----------|-------|-----------|----------|
| 22             | .37 | 1/4  | 10-32 (F) | ●     |           |          |
| SF-22          | .37 | 5/16 | 10-32 (F) |       | ●         |          |



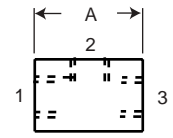
| Product Number | A   | Hex  | 1         | 2 thru              | Brass ENI | SS 303 | Installed Height | Bulk Head |
|----------------|-----|------|-----------|---------------------|-----------|--------|------------------|-----------|
| SBH-10         | .45 | 9/16 | 10-32 (F) | 15/32-32 x10-32 (F) | ●         |        | .10              |           |
| SBH-10-SS      | .45 | 9/16 | 10-32 (F) | 15/32-32 x10-32 (F) |           | ●      | .10              |           |
| SBH-125        | .45 | 9/16 | 1/8 (F)   | 15/32-32 x10-32 (F) | ●         |        | .10              |           |
| SBH-125-SS     | .45 | 9/16 | 1/8 (F)   | 15/32-32 x10-32 (F) |           | ●      | .10              |           |



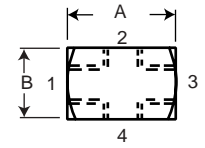
| Product Number | A    | B Barb OD | C Orifice | D         | Hex | Brass ENI | SS 303 | Installed Height | Straight Connector |
|----------------|------|-----------|-----------|-----------|-----|-----------|--------|------------------|--------------------|
| HBF-062        | .465 | .100      | .046      | 10-32 (M) | -   | ●         |        | .30              | Hexless            |
| HBF-110        | .44  | .141      | .078      | 10-32 (M) | -   | ●         |        | .28              |                    |
| HBF-140        | .52  | .172      | .078      | 10-32 (M) | -   | ●         |        | .36              |                    |
| HBF-170        | .58  | .200      | .093      | 10-32 (M) | -   | ●         |        | .42              |                    |



| Product Number | A    | B      | 1         | 2         | 3         | Brass | Brass ENI | Installed Height | Tee |
|----------------|------|--------|-----------|-----------|-----------|-------|-----------|------------------|-----|
| 02-3           | .562 | 3/8 sq | 10-32 (F) | 10-32 (F) | 10-32 (F) | ●     |           | .563             |     |
| 02-3N          | .562 | 3/8 sq | 10-32 (F) | 10-32 (F) | 10-32 (F) |       | ●         | .563             |     |



| Product Number | A   | B      | 1         | 2, 3, 4   | Brass | Brass ENI | Installed Height | Cross |
|----------------|-----|--------|-----------|-----------|-------|-----------|------------------|-------|
| 02-4           | .56 | 3/8 sq | 10-32 (F) | 10-32 (F) | ●     |           | .56              |       |

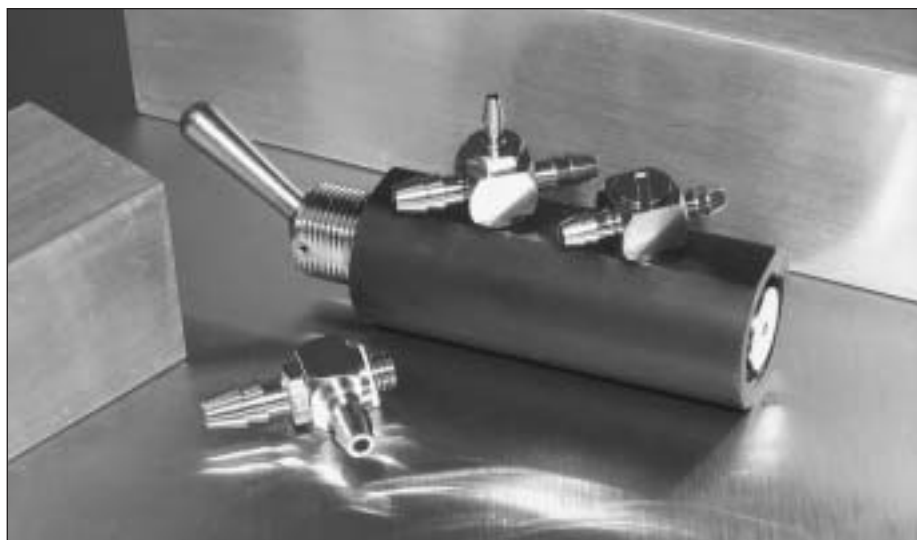


● Please refer to page 118 for **Ordering Information**.

Fittings  
Miscellaneous

### Features

- Captured O-ring seal
- Precision Machined Barb
- Electroless Nickel Plated
- Low Profile



## Mini Banjo Fittings

Pneumadyne's Mini Banjo Fittings are ideal for limited space applications. An overall height of .43 in. contributes to a 34% space savings over standard o-ring fittings (overall height of .65).

### Materials

Brass with Electroless Nickel  
Buna-N O-rings

Select from several low profile configurations which include swivel elbows, tees and crosses.

Mini Banjo Fittings incorporate our captured o-ring design to ensure the superior static sealing qualities of an o-ring plus the reliability of a metal-to-metal mechanical fit. When installed the fittings remain tight and retain their position under constant vibration.

- *Please refer to page 118 for tubing recommendations and performance data.*

### Ordering Information

- Alternate Barb Combinations Available - contact factory
- Optional Seals available upon request - contact factory

### To place an order:

Phone: (763) 559-0177

Fax: (763) 559-0547

### Visit us online:

[www.pneumadyne.com](http://www.pneumadyne.com)

[sales@pneumadyne.com](mailto:sales@pneumadyne.com)

**MasterCard/Visa and  
American Express  
accepted\***

*\*not accepted on*

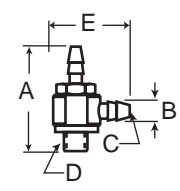


*Pneumadyne distributor orders*

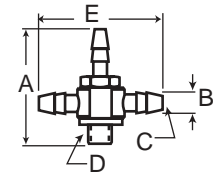


## Standard Brass Fitting

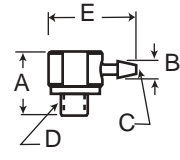
| Product Number  | A   | B<br>Barb<br>OD | C<br>Orifice | D<br>Thd. Size | E   | Wrench<br>Flats | Installed<br>Height |
|-----------------|-----|-----------------|--------------|----------------|-----|-----------------|---------------------|
| <b>LPRT-062</b> | .76 | .100            | .046         | 10-32 (M)      | .57 | 5/16            | .62                 |
| <b>LPRT-110</b> | .74 | .141            | .078         | 10-32 (M)      | .55 | 5/16            | .60                 |
| <b>LPRT-140</b> | .82 | .172            | .078         | 10-32 (M)      | .63 | 5/16            | .68                 |



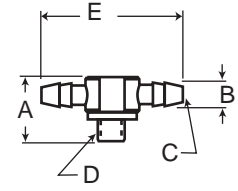
|                |     |      |      |           |     |      |     |
|----------------|-----|------|------|-----------|-----|------|-----|
| <b>LPX-062</b> | .76 | .100 | .046 | 10-32 (M) | .82 | 5/16 | .62 |
| <b>LPX-110</b> | .74 | .141 | .078 | 10-32 (M) | .79 | 5/16 | .60 |
| <b>LPX-140</b> | .82 | .172 | .078 | 10-32 (M) | .94 | 5/16 | .68 |



|                 |     |      |      |           |     |      |     |
|-----------------|-----|------|------|-----------|-----|------|-----|
| <b>SLPL-062</b> | .43 | .100 | .046 | 10-32 (M) | .57 | 5/16 | .29 |
| <b>SLPL-110</b> | .43 | .141 | .078 | 10-32 (M) | .55 | 5/16 | .29 |
| <b>SLPL-140</b> | .43 | .172 | .078 | 10-32 (M) | .63 | 5/16 | .29 |



|                 |     |      |      |           |     |      |     |
|-----------------|-----|------|------|-----------|-----|------|-----|
| <b>SLPT-062</b> | .43 | .100 | .046 | 10-32 (M) | .82 | 5/16 | .29 |
| <b>SLPT-110</b> | .43 | .141 | .078 | 10-32 (M) | .79 | 5/16 | .29 |
| <b>SLPT-140</b> | .43 | .172 | .078 | 10-32 (M) | .94 | 5/16 | .29 |



Fittings  
Mini Banjo

### Custom Designed Products

Our experienced engineers are always available to assist in the design and development of custom products. We take pride in our ability to partner with customers and develop successful solutions for custom applications.



Dedication to quality and customer satisfaction are always paramount at Pneumadyne.

*Please complete form on page 129 to request a Pneumadyne custom product or sample.*



### Features

- Tapered Thread  
*No Gasket Required*
- Larger Orifice
- Thick Thread Wall
- Precision Machined  
Barbs
- Brass

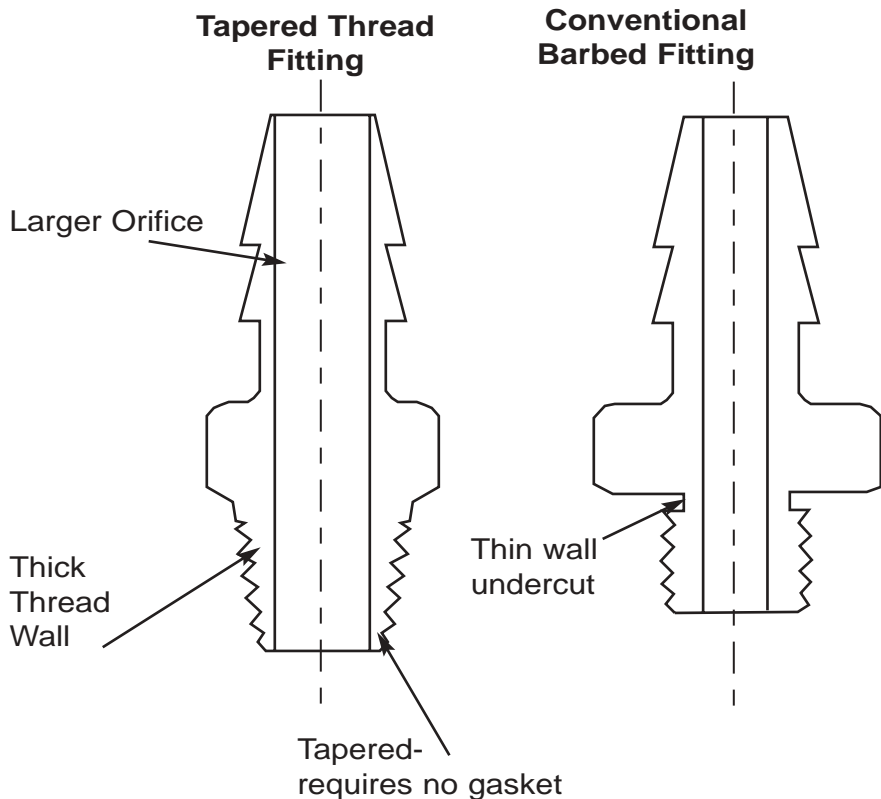


## Tapered Thread Fittings

Engineers at Pneumadyne pioneered the 10-32 tapered thread design and have incorporated it in a 10-32 fitting. This unique design eliminates the need for a soft seal undercut at the base of the fitting and produces a seal similar to pipe thread. The absence of the undercut also allows for a larger than normal hole permitting more flow. Tapered threads are sturdier than thin walled 10-32 fittings and can be used in conventional straight female threads as well.

***Tape or Thread Sealant recommended***

***Custom Designs are Welcome***



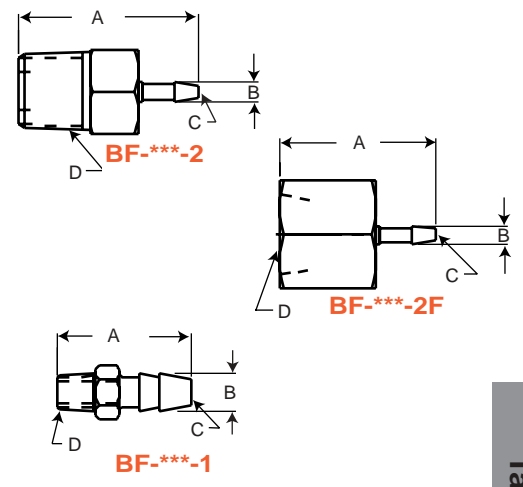
● Please refer to page 118 for **Ordering Information**.



| Product Number   | A   | B<br>Barb<br>OD | C<br>Orifice | D         | Hex  | Brass | Brass<br>ENI | Installed<br>Height |
|------------------|-----|-----------------|--------------|-----------|------|-------|--------------|---------------------|
| <b>BF-062</b>    | .57 | .100            | .046         | 10-32(M)  | 1/4  | ●     |              | .37                 |
| <b>BF-062-2</b>  | .94 | .100            | .046         | 1/8 (M)   | 7/16 | ●     |              | .565                |
| <b>BF-062-2F</b> | .75 | .100            | .046         | 1/8 (F)   | 1/2  | ●     |              | .815                |
| <b>BF-110-2</b>  | .88 | .141            | .078         | 1/8 (M)   | 7/16 | ●     |              | .51                 |
| <b>BF-110-2N</b> | .88 | .141            | .078         | 1/8 (M)   | 7/16 |       | ●            | .51                 |
| <b>*BF-140</b>   | .70 | .170            | .095         | 10-32 (M) | 1/4  | ●     |              | .50                 |
| <b>BF-170-1</b>  | .70 | .200            | .108         | 10-32 (M) | 1/4  | ●     |              | .50                 |
| <b>BF-170-1N</b> | .70 | .200            | .108         | 10-32 (M) | 1/4  |       | ●            | .50                 |
| <b>BF-170-2</b>  | .90 | .200            | .108         | 1/8 (M)   | 7/16 | ●     |              | .53                 |
| <b>BF-170-2F</b> | .88 | .200            | .093         | 1/8 (F)   | 1/2  | ●     |              | .875                |

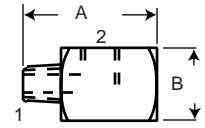
\*Formerly BF-125

### Fitting: Tapered



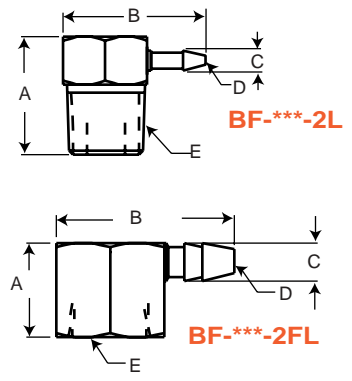
| Product Number | A   | B      | 1        | 2        | Brass | Brass<br>ENI | Installed<br>Height |
|----------------|-----|--------|----------|----------|-------|--------------|---------------------|
| <b>32-1</b>    | .70 | 3/8 sq | 10-32(M) | 10-32(F) | ●     |              | .50                 |

### Elbow: Street



| Product Number    | A   | B    | C<br>Barb<br>OD | D<br>Orifice | E       | Hex  | Brass | Brass<br>ENI | Installed<br>Height |
|-------------------|-----|------|-----------------|--------------|---------|------|-------|--------------|---------------------|
| <b>BF-062-2FL</b> | .50 | .875 | .100            | .046         | 1/8 (F) | 9/16 | ●     |              | .50                 |
| <b>BF-062-2L</b>  | .62 | .752 | .100            | .046         | 1/8 (M) | 7/16 | ●     |              | .25                 |
| <b>BF-110-2L</b>  | .62 | .936 | .141            | .078         | 1/8 (M) | 7/16 | ●     |              | .25                 |
| <b>BF-170-2FL</b> | .50 | .938 | .200            | .093         | 1/8 (F) | 9/16 | ●     |              | .50                 |
| <b>BF-170-2L</b>  | .62 | .938 | .200            | .093         | 1/8 (M) | 7/16 | ●     |              | .25                 |
| <b>BF-170-2LN</b> | .62 | .938 | .200            | .093         | 1/8 (F) | 7/16 |       | ●            | .25                 |

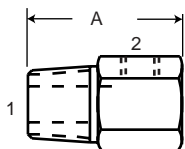
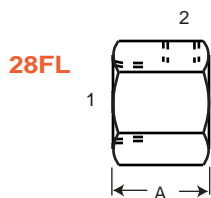
### Elbow: Tapered to Barb



Fittings  
Tapered Thread

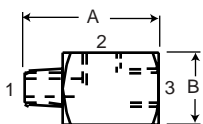
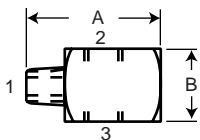


## Elbow: Reducing



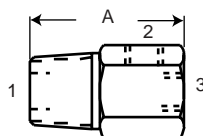
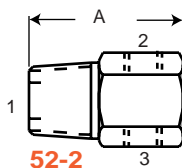
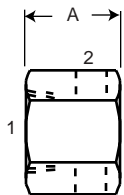
| Product Number | A   | 1       | 2         | Hex   | Brass | Brass ENI | Installed Height |
|----------------|-----|---------|-----------|-------|-------|-----------|------------------|
| <b>28FL</b>    | .50 | 1/8 (F) | 10-32 (F) | 9/16  | ●     |           | .50              |
| <b>29L</b>     | .85 | 3/8 (M) | 10-32 (F) | 11/16 | ●     |           | .48              |
| <b>52-1</b>    | .81 | 1/8 (M) | 10-32 (F) | 7/16  | ●     |           | .44              |
| <b>52-1N</b>   | .81 | 1/8 (M) | 10-32 (F) | 7/16  |       | ●         | .44              |

## Tee



| Product Number | A   | B      | 1         | 2         | 3         | Brass | Brass ENI | Installed Height |
|----------------|-----|--------|-----------|-----------|-----------|-------|-----------|------------------|
| <b>32-2</b>    | .70 | 3/8 sq | 10-32 (M) | 10-32 (F) | 10-32 (F) | ●     |           | .50              |
| <b>32-4</b>    | .70 | 3/8 sq | 10-32 (M) | 10-32 (F) | 10-32 (F) | ●     |           | .50              |

## Tee: Reducing



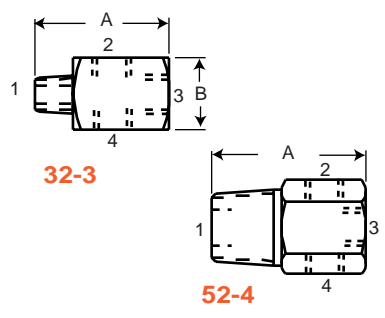
| Product Number | A   | 1       | 2         | 3         | Hex  | Brass | Brass ENI | Installed Height |
|----------------|-----|---------|-----------|-----------|------|-------|-----------|------------------|
| <b>28FT</b>    | .50 | 1/8 (F) | 10-32 (F) | 10-32 (F) | 9/16 | ●     |           | .50              |
| <b>52-2</b>    | .81 | 1/8 (M) | 10-32 (F) | 10-32 (F) | 7/16 | ●     |           | .44              |
| <b>52-3</b>    | .90 | 1/8 (M) | 10-32 (F) | 10-32 (F) | 7/16 | ●     |           | .53              |
| <b>52-3N</b>   | .90 | 1/8 (M) | 10-32 (F) | 10-32 (F) | 7/16 |       | ●         | .53              |

All dimensions and specifications are subject to change without notice



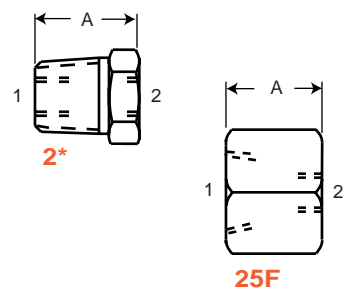
| Product Number | A   | B        | 1         | 2, 3, 4   | Brass | Brass ENI | Installed Height |
|----------------|-----|----------|-----------|-----------|-------|-----------|------------------|
| 32-3           | .70 | 3/8 sq   | 10-32 (M) | 10-32 (F) | ●     |           | .50              |
| 52-4           | .90 | 7/16 Hex | 1/8 (M)   | 10-32 (F) | ●     |           | .53              |

### Crosses



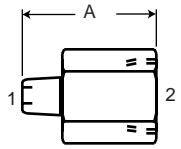
| Product Number | A   | 1        | 2         | Hex  | Brass | Brass ENI | Installed Height |
|----------------|-----|----------|-----------|------|-------|-----------|------------------|
| 25             | .53 | 1/8 (M)  | 10-32 (F) | 7/16 | ●     |           | .16              |
| 25F            | .50 | 1/8 (F)  | 10-32 (F) | 9/16 | ●     |           | .50              |
| 26             | .68 | 1/4 (M)  | 10-32 (F) | 9/16 | ●     |           | .18              |
| 26N            | .68 | 1/4 (M)  | 10-32 (F) | 9/16 |       | ●         | .18              |
| 27             | .41 | 1/16 (M) | 10-32 (F) | 3/8  | ●     |           | .14              |

### Reducer Bushing



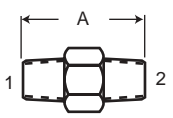
| Product Number | A   | 1         | 2       | Hex  | Brass | Brass ENI | Installed Height |
|----------------|-----|-----------|---------|------|-------|-----------|------------------|
| 34             | .70 | 10-32 (M) | 1/8 (F) | 7/16 | ●     |           | .50              |
| 34A            | .75 | 1/16 (M)  | 1/8 (F) | 7/16 | ●     |           | .50              |

### Adapters



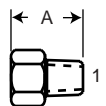
| Product Number | A   | 1         | 2         | Hex | Brass | Brass ENI | Installed Height |
|----------------|-----|-----------|-----------|-----|-------|-----------|------------------|
| 33             | .56 | 10-32 (M) | 10-32 (M) | 1/4 | ●     |           | .16              |

### Nipple



| Product Number | A   | 1         | Hex | Brass | Brass ENI | Installed Height |
|----------------|-----|-----------|-----|-------|-----------|------------------|
| 30             | .37 | 10-32 (M) | 1/4 | ●     |           | .17              |

### Plug



Fittings  
Barb-to-Barb



### Features

- Precision Machined for 1/8", 5/32", 1/4" tubing
- Eliminates the need for sleeves
- Electroless Nickel Plated

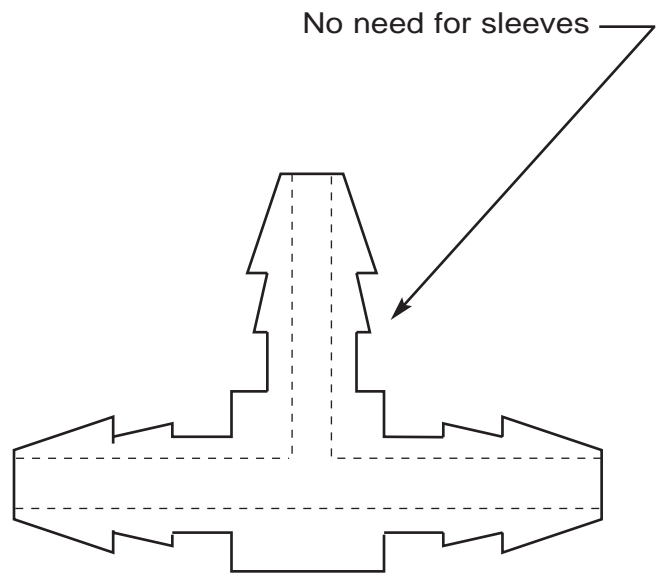


## Barb-to-Barb Fittings

Pneumadyne's Barb-to-Barb fittings are high quality, durable brass bars with the sharpness required to maintain connection even in high pressure and vibration applications. The electroless nickel plated barbed fittings are offered in a variety of sizes and configurations.

***We design custom products to meet your application needs.***

- Please refer to page 118 for tubing recommendations, performance data and **Ordering Information.**

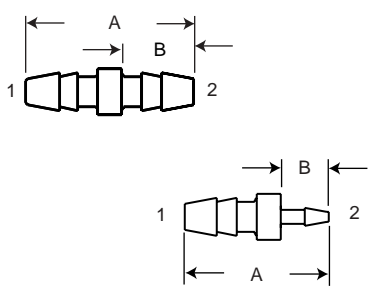


Electroless Nickel plated for corrosion resistance



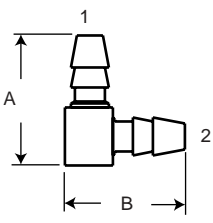
| Product Number  | A   | B       | 1 Barb OD/ID | 2 Barb OD/ID | Brass ENI | Brass |
|-----------------|-----|---------|--------------|--------------|-----------|-------|
| <b>SBF-1616</b> | .63 | .25     | .100/.046    | .100/.046    | ●         |       |
| <b>SBF-1818</b> | .88 | .38     | .200/.108    | .200/.108    | ●         |       |
| <b>SBF-1816</b> | .75 | .38/.25 | .200/.093    | .100/.046    | ●         |       |

### Barb-to-Barb



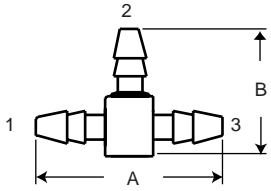
| Product Number | A   | B   | 1 Barb OD/ID | 2 Barb OD/ID | Brass ENI | SS 303 | Installed Height |
|----------------|-----|-----|--------------|--------------|-----------|--------|------------------|
| <b>SBF-18L</b> | .78 | .63 | .200/.093    | .200/.093    | ●         |        |                  |

### Elbow



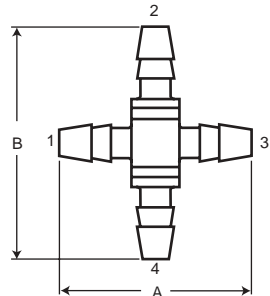
| Product Number   | A    | B   | 1 Barb OD/ID | 2 Barb OD/ID | 3 Barb OD/ID | Brass ENI | Brass |
|------------------|------|-----|--------------|--------------|--------------|-----------|-------|
| <b>SBF-10T</b>   | .72  | .78 | .140/.078    | .140/.078    | .140/.078    | ●         |       |
| <b>SBF-1410T</b> | .87  | .64 | .172/.078    | .140/.078    | .172/.078    | ●         |       |
| <b>SBF-16T</b>   | .79  | .47 | .100/.046    | .100/.046    | .100/.046    | ●         |       |
| <b>SBF-18T</b>   | 1.00 | .78 | .200/.108    | .200/.093    | .200/.108    | ●         |       |
| <b>SBF-1810T</b> | 1.00 | .64 | .200/.108    | .140/.078    | .200/.108    | ●         |       |
| <b>SBF-1816T</b> | 1.00 | .66 | .200/.108    | .100/.046    | .200/.108    | ●         |       |

### Tee



| Product Number | A    | B    | 1,3 Barb OD/ID | 2,4 Barb OD/ID | Brass ENI | Brass |
|----------------|------|------|----------------|----------------|-----------|-------|
| <b>SBF-18X</b> | 1.00 | 1.21 | .200/.108      | .200/.093      | ●         |       |

### Cross



All dimensions and specifications are subject to change without notice

Fittings  
Barb-to-Barb

## Features

- Durable Nylon Material
- Precision Molded
- Available in Black and White



## Plastic Fittings

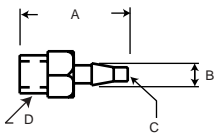
Plastic fittings are a cost effective solution in applications where media is compatible with fitting material. Contact factory for custom molded material options.

### Performance Data: Nylon Fittings

| Temperature Range | Operating Pressure | Media                          | Materials |
|-------------------|--------------------|--------------------------------|-----------|
| 0° to 160° F      | 0 to 125 psi       | Fluids Compatible w/ Materials | Nylon     |

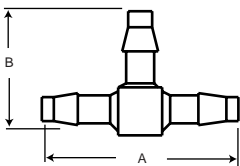
\* Limited to tubing used

### Straight Connector



| Product Number | A OAL | B Barb | C Orifice OD | D         | Hex | Color |
|----------------|-------|--------|--------------|-----------|-----|-------|
| <b>PA-1</b>    | .56   | .108   | .046         | 10-32 (M) | 1/4 | WHT   |
| <b>PA-2</b>    | .56   | .108   | .046         | 10-32 (M) | 1/4 | BLK   |
| <b>PC-1</b>    | .625  | .175   | .078         | 10-32 (M) | 1/4 | WHT   |
| <b>PC-2</b>    | .625  | .175   | .078         | 10-32 (M) | 1/4 | BLK   |

### Barbed Tee



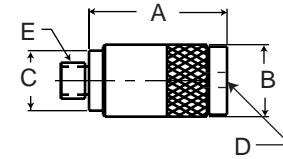
| Product Number | A    | OD Barbs 3x | Orifice | Color |
|----------------|------|-------------|---------|-------|
| <b>PG-1</b>    | .705 | .107        | .046    | WHT   |
| <b>PG-2</b>    | .705 | .107        | .046    | BLK   |
| <b>PJ-1</b>    | 1.04 | .175        | .088    | WHT   |
| <b>PJ-2</b>    | 1.04 | .175        | .088    | BLK   |



- ### Features
- Push-to-Connect
  - Precision Machined
  - Acetal Release Button
  - Captured O-Ring seal (threaded ONLY)

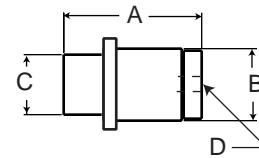
| Product Number | A   | B   | C   | D<br>Tube OD | E         |
|----------------|-----|-----|-----|--------------|-----------|
| SF-125PI       | .72 | .38 | .31 | 1/8          | 10-32 (M) |
| SF-156PI       | .72 | .38 | .31 | 5/32         | 10-32 (M) |

### Push-to-Connect Fitting



| Product Number | A   | B   | C   | D<br>Tube OD |
|----------------|-----|-----|-----|--------------|
| CF-125PI       | .68 | .36 | .38 | 1/8          |
| CF-156PI       | .69 | .38 | .38 | 5/32         |
| CF-250PI       | .87 | .47 | .38 | 1/4          |

### Push-to-Connect Cartridge



- Contact factory for cavity drawing

### Ordering Information

- Red release button standard; Contact factory for optional colors
- DOT applications- Contact factory
- 95A Durometer Polyurethane recommended
- Cavity drawing available for **full** cartridge- Contact factory
- **Half** cartridge is available for direct installation- Contact factory

### Materials

Brass, Electroless Nickel Plating, Acetal, Buna-N Seals



*Captured O-ring*



*Standard Tapered Thread sizes available*

## Fitting Specifications

### Performance Data

| Temperature Range               | Operating Pressure | Media                      |
|---------------------------------|--------------------|----------------------------|
| -20° to 160° F<br>-28° to 71° C | Vacuum to 125 psi  | Fluids compatible w/ seals |

### Flow Rate

| Barb Size | OD/ID      | C <sub>v</sub> | Flow Rate (scfm) |         |
|-----------|------------|----------------|------------------|---------|
|           |            |                | 50 psi           | 125 psi |
| 062       | .100/ .046 | .06            | 1.8              | 4.0     |
| 110       | .141/ .078 | .20            | 5.6              | 12.0    |
| 140       | .172/ .078 | .20            | 5.6              | 12.0    |
| 170       | .200/ .093 | .28            | 7.3              | 16.5    |
|           | .200/ .108 | .44            | 10.5             | 23.5    |

- All Flow Rates are approximate

### Tubing Recommendation Chart

| Barb | Tubing: OD/ID                                     |
|------|---|
| 062  | 1/8 x 1/16 Polyurethane                           |
| 110  | 5/32 x 5/64 Polyurethane or 5/32 x 7/64 Nylon     |
| 140  | 1/4 x 1/8 Polyurethane or 3/16 x 9/64 Nylon       |
| 170  | 1/4 x 1/8 Polyurethane or 1/4 x .170 Polyethylene |

### Ordering Information

- Standard quantities
  - 25 pcs per bag
  - 100 pcs per box
  - Bulk orders
- Bulk Orders are packaged by weight and O-rings are packaged separately
- Optional O-rings available- contact factory

*Visit us at*

**pneumadyne.com**

for standard and new product information and useful links

- Detailed product overview
- Product Distribution
- New Product Section
- Order Product Information
- Send e-mail

