



X07



P01909



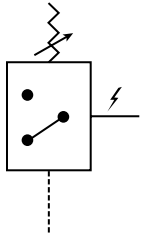
P01908

### Pressure Switch Cross Reference

Old Number	New Number
K18-02-B000	P01908 18" ..... Flying Leads, 1/4" NPT
K18-02-C000	No Replacement
K18-02-D000	P01909 ..... DIN Connector, 1/4" NPT
K18-C2-B000	P01905 18" ..... Flying Leads, 1/4" BSPP
K18-C2-C000	No Replacement
K18-C2-D000	P01913 ..... DIN Connector, 1/4" BSPP

# Pressure Switch X07

 = "Most Popular"



**X07-01-000**

## Specifications

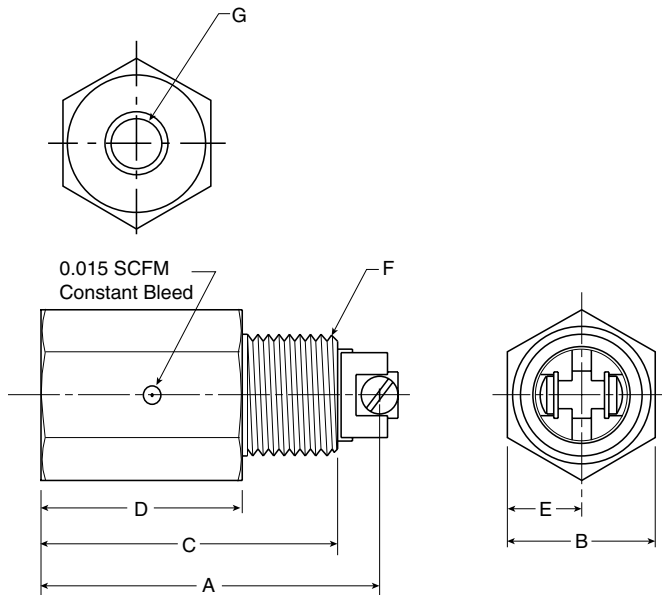
Operating Temperature	32° to 150°F (0° to 66°C)	
Maximum Supply Pressure	250 PSIG (17,2 bar)	
Port Size	NPT / BSPP-G	1/8
Weight	lb. (kg)	.18 (0,08)
Electrical	125v, 3A	

## Materials of Construction

Body	Aluminum
Spool	Plastic
Springs	Steel

## X07 Pressure Switch

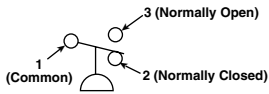
This product consists of a “plunger” type normally open electrical switch mounted in an aluminum housing. It can be used to convert an air signal to an electrical signal from any source whose supply pressure is 10 PSIG or greater. The compressed air port is 1/8" NPT female and the conduit connection is 1/2" male. The switch is 125 volt, 3 amp single-pole, single-throw, and is equipped with screw-type electrical terminals. The switch automatically resets when air pressure decays to approximately 5 PSIG.



## Dimensions

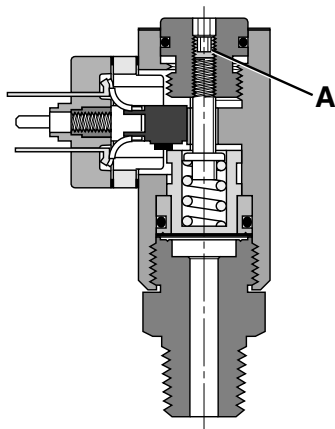
Models	Inches (mm)	A	B	C	D	E	F	G
Standard Unit X07-01-000		2.29 (58)	1.00 (25)	2.00 (51)	1.36 (34.5)	0.50 (13)	0.50 (13)	0.1 (3)

# Pressure Switch P01909



## Features:

- Inline Mounting
- Dial Indicator for Easy Pressure Setting
- 5 Amp Rated Snap Action Micro Switch
- Heavy Duty Aluminum Components
- Compact Size
- Din 43650HCM Connector
- IP65 Rated
- Field Adjustable 30-150 PSIG
- +/- 2% Repeatability
- Single Pole / Double Throw Switch

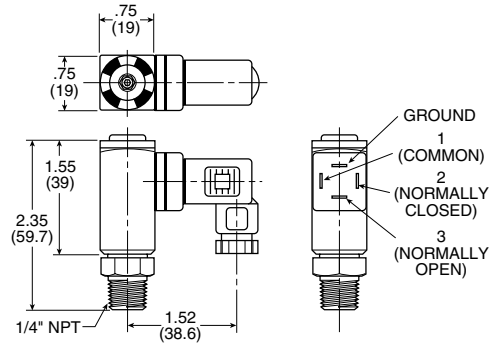


## Kits and Accessories

- Bushing 1/4" to 3/8" ..... 209P-6-4
- Bushing 1/4" to 1/2" ..... 209P-8-4

## Specifications

- Electrical ..... 5 AMP, 12/24VDC, 125/250VAC
- Maximum Inlet Pressure ..... 300 PSIG (20 bar)
- Mechanical Life ..... 10<sup>6</sup> at standard operating conditions



## Operation

The pressure switch monitors the air pressure in your pneumatic system. When the pressure in your system either drops below or exceeds the set point pressure, an electrical output is given.

Using a .125" (3mm) hex wrench, turn the adjusting screw (**A**) clockwise to increase the pressure set point and counterclockwise to decrease the pressure setting. One complete revolution of the adjusting screw covers the complete adjustment range of 30-150 PSIG (2-10 bar).

## Definitions and Terminology

**Repeatability** — Accuracy is the maximum allowable set point deviation of a single pressure or temperature switch under one given set of environmental and operational conditions.

**Single Pole Double Throw (SPDT) Switching element** — A SPDT switching element has one normally open, one normally closed and one common terminal. Three terminals mean that the switch can be wired with the circuit either normally open (NO), or normally closed (NC), or both.

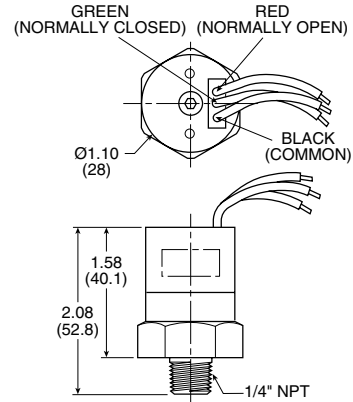
**Dead Band** — The dead band, sometimes referred to as “differential” or “hysteresis”, is the change in pressure between actuation and deactuation set points.

- Electrical Connection ..... DIN 43650HCM
- Electrical Protection ..... IP65
- Repeatability ..... ±2% at 70°F (20°C) Ambient
- Temperature Range ..... -40° to 180°F (-40° to 80°C)
- Weight ..... 0.13 lb. (0.06 Kg)

## Materials of Construction

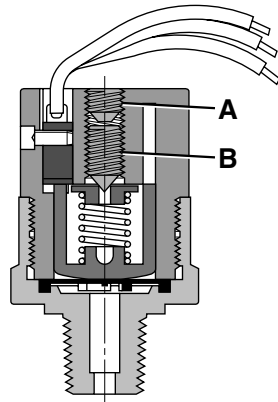
- Diaphragm ..... Nitrile
- Housing ..... Anodized Aluminum

# Pressure Switch P01908



### Features:

- Inline Mounting
- 5 Amp Rated Snap Action Micro Switch
- Brass Body
- Compact Size
- Flying Leads Electrical Connection
- IP65 Rated
- Field Adjustable 25-100 PSIG
- +/- 2% Repeatability
- Single Pole / Double Throw Switch



### Operation

The pressure switch monitors the air pressure in your pneumatic system. When the pressure in your system either drops below or exceeds the set point pressure, an electrical output is given.

Remove screw **(A)** from the top of the switch. Using a .125" (3mm) hex wrench, turn the adjusting screw **(B)** clockwise to increase the pressure set point and counterclockwise to decrease the pressure setting, replace screw **(A)**. Adjustment range of 25 to 100 PSIG (.7 to 7.5 bar).

### Standard electrical circuit

Black ..... Common  
Green ..... Normally Closed  
Red ..... Normally Open

### Definitions and Terminology

**Repeatability** — Accuracy is the maximum allowable set point deviation of a single pressure or temperature switch under one given set of environmental and operational conditions.

**Single Pole Double Throw (SPDT) Switching element** — A SPDT switching element has one normally open, one normally closed and one common terminal. Three terminals mean that the switch can be wired with the circuit either normally open (NO), or normally closed (NC), or both.

**Dead Band** — The dead band, sometimes referred to as “differential” or “hysteresis”, is the change in pressure between actuation and deactuation set points.

### Kits and Accessories

- Bushing 1/4" to 3/8" ..... 209P-6-4
- Bushing 1/4" to 1/2" ..... 209P-8-4

### Specifications

- Electrical ..... 5 AMP, 12/24VDC, 125/250VAC
- Maximum Inlet Pressure ..... 300 PSIG (20 bar)
- Mechanical Life ..... 2x10<sup>6</sup> at 75 PSIG (5 bar)

- Electrical Connection ..... 18" Flying Leads
- Electrical Protection ..... IP65
- Repeatability ..... ±2% at 70°F (20°C) Ambient
- Temperature Range ..... -40° to 180°F (-40° to 80°C)
- Weight ..... 0.23 lb. (0.11 Kg)

### Materials of Construction

- Diaphragm ..... Nitrile
- Housing ..... Brass