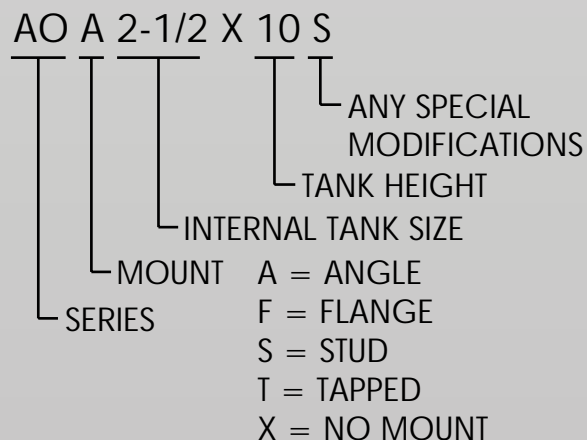


Flairline AO-Series Air/Oil tanks provide customers with a means to benefit from the smooth control of hydraulic oil using existing shop air. Pressurizing the tank from one end with existing shop air provides hydraulic fluid out the opposite end into the cylinder. The cylinder speed can be controlled with the use of flow controls to adjust exhausting fluid from the cylinder. A typical circuit is shown below.

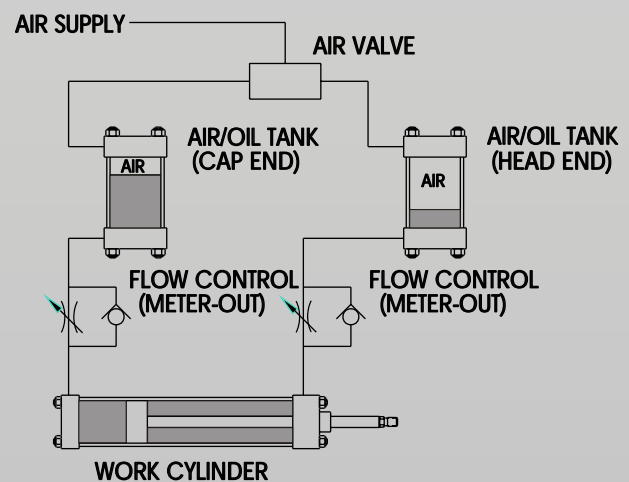
### Construction & Features:

- Internally the tank has 2 baffles, one on each end. These reduce aeration of the hydraulic fluid when leaving the tank and when pressurized at the opposite end.
- The cylinder barrel is made of a translucent, wound fiberglass and epoxy composite. This provides an easy-to-read level indicator as well as a high strength non-denting body.
- End caps are precision-machined anodized aluminum.
- Tie rods, mounts and nuts have a corrosion resistant coating.

### Ordering Information:



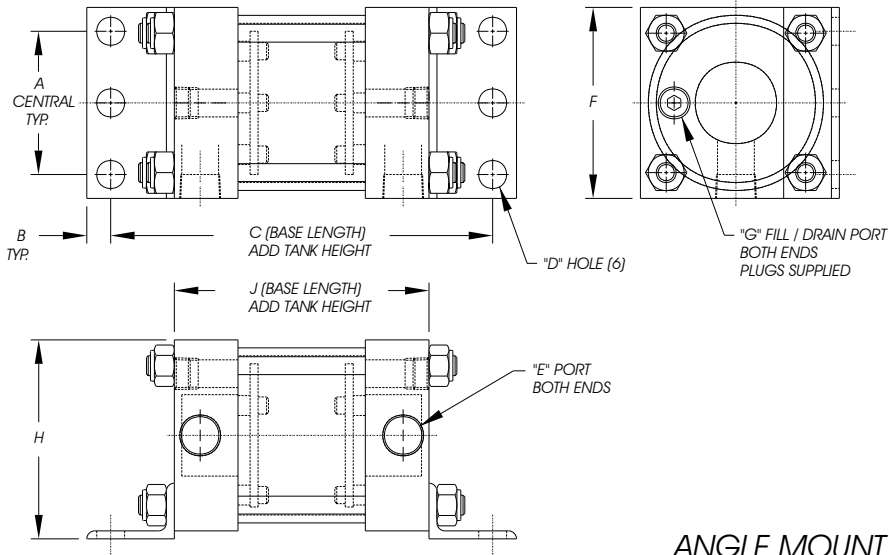
### Typical Circuit



SIZE EACH TANK A MINIMUM OF 1-1/2 TIMES THE VOLUME REQUIRED FOR THE WORK CYLINDER

# AO SERIES

200 PSI MAXIMUM RATING

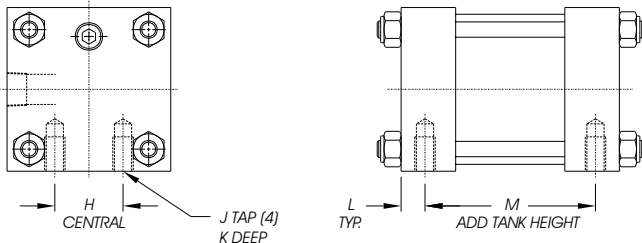


## ANGLE MOUNT

BORE SIZE	AREA	*GALS./ INCH	DIM. A	DIM. B	DIM. C	DIA. D	PORT E	DIM. F	PORT G	DIM. H	DIM. J
2.000	3.14	.0135	1.75	.38	4.00	.44	3/8	2.50	1/4	2.69	2.00
2.500	4.90	.0212	2.25	.38	4.00	.44	3/8	3.00	1/4	3.13	2.00
3.250	8.29	.0358	2.75	.50	5.00	.56	1/2	3.75	3/8	3.81	2.50
4.000	12.56	.0544	3.50	.50	5.00	.56	1/2	4.50	1/2	4.50	2.50
5.000	19.63	.0849	4.25	.63	5.25	.69	1/2	5.50	1/2	5.50	2.50
6.000	28.27	.1223	5.25	.63	5.75	.81	3/4	6.50	3/4	6.50	3.00
8.000	50.26	.2175	7.13	.69	6.63	.81	3/4	8.50	3/4	8.50	3.00

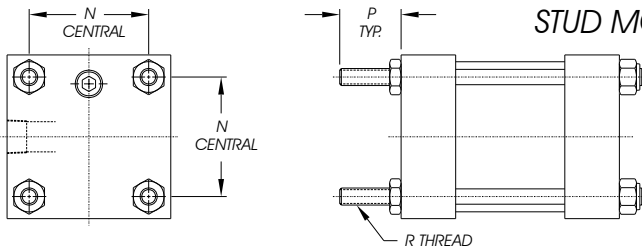
\* THIS IS TOTAL INTERNAL VOLUME, NOT RECOMMENDED USABLE OIL CAPACITY

## TAPPED MOUNT



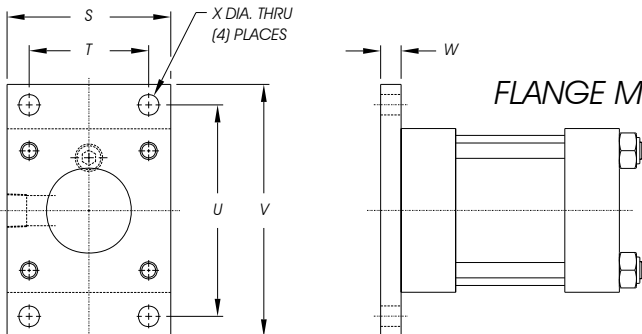
BORE SIZE	DIM. H	THREAD J	DIM. K	DIM. L	DIM. M
2.000	.88	5/16-18	.50	.44	1.13
2.500	1.25	3/8-16	.63	.44	1.13
3.250	1.50	1/2-13	.81	.56	1.38
4.000	2.06	1/2-13	.81	.56	1.38
5.000	2.69	5/8-11	1.0	.56	1.38
6.000	3.25	3/4-10	1.19	.69	1.63
8.000	4.50	3/4-10	1.25	.69	1.63

## STUD MOUNT



BORE SIZE	DIM. N	DIM. P	THREAD R
2.000	1.84	1.13	5/16-24
2.500	2.19	1.13	5/16-24
3.250	2.76	1.38	3/8-24
4.000	3.32	1.38	3/8-24
5.000	4.10	1.81	1/2-20
6.000	4.88	1.81	1/2-20
8.000	6.44	2.31	5/8-18

## FLANGE MOUNT



BORE SIZE	DIM. S	DIM. T	DIM. U	DIM. V	DIM. W	DIA. X
2.000	2.50	1.84	3.38	4.13	.38	.38
2.500	3.00	2.19	3.88	4.63	.38	.38
3.250	3.75	2.76	4.69	5.50	.63	.44
4.000	4.50	3.32	5.44	6.25	.63	.44
5.000	5.50	4.10	6.63	7.63	.63	.56
6.000	6.50	4.88	7.63	8.63	.75	.56
8.000	NOT AVAILABLE					