

# Quick Fitting Type Speed Control Valve

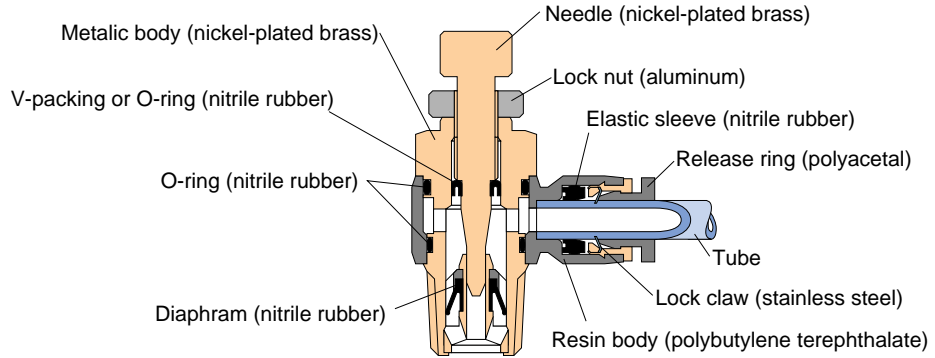
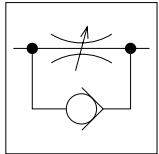
## Speed Controller Mini-Type

### Features

- Mini-Type Speed Controllers, with a compact body, can control the same flows as the standard type speed controllers do.

### Construction

Graphical representation



### Specification

Fluid admitted	Air	
Service pressure range	0 ~ 150psi	0 ~ 0.9MPa
Check valve operating pressure	7.25psi	0.05MPa
Service temperature range	32 ~ 140°F	0 ~ 60°C

### Model Designation (Example)



(1) Type

(2) Tube dia.

Tube dia.	mm Size			Inch size
Code	3	4	6	1/8
Size(mm)	φ3	φ4	φ6	φ3.2

(3) Thread size

Thread size	Metric thread(mm)		Taper pipe thread	
Code	M3	M5	01	02
Size	M3×0.5	M5×0.8	R1/8	R1/4

(4) Mini-type (Code:M)

\*Be sure to specify "M", otherwise standard type will be delivered.

(5) Control direction

A : Meter-out control

(Inscription "A" on needle top or silver-color lock nut) (\*1)

B : Meter-in control

(Inscription "B" on needle top or black-color lock nut) (\*2)

(6) Specification

K : Spring return type

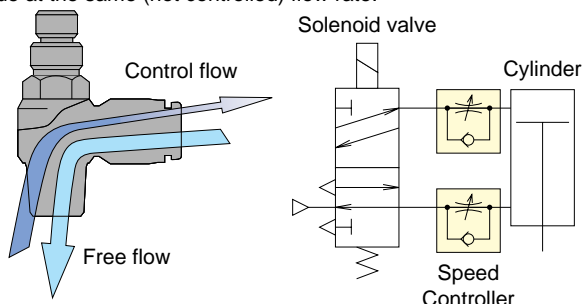
Check valve operating pressure→0.02MPa(2.9psi)

[Service pressure range→0~0.5MPa(0~73psi)]

No code : Standard type.

#### \*1. Meter-out control

- The flow rate of air entering from the thread side can be controlled, whereas air entering from the joint side comes out from the thread side at the same (not controlled) flow rate.



#### \*2. Meter-in control

- The flow rate of air entering from the joint side can be controlled, whereas air entering from the thread side comes out from the Joint side at the same (not controlled) flow rate.

